

PASSE CLOISON



0142 0007

Passer cloison Ø16mm

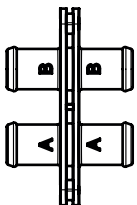
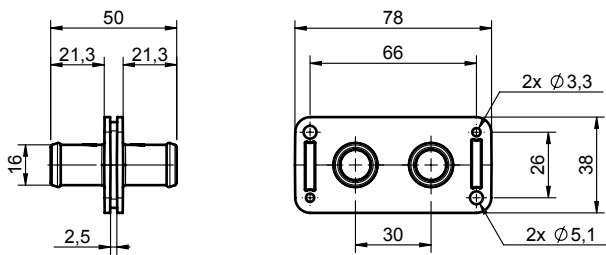
- Raccord pour circuit d'eau pour tuyaux à eau Øint 16mm
- Matière : Polyamide 6.6 chargé 30% fibre de verre (PA66GF30)
- Température de fonctionnement : mini -40°C, maxi +110°C
- Version droite ou version coudée 90°

Bulkhead fitting Ø16mm

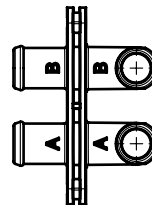
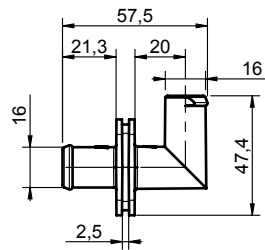
- Water system connector for inside Ø16mm water hose
- Material: 6.6 polyamide with 30% glass fibers (PA66GF30)
- Operating temperature: mini -40°C, maxi +110°C
- Straight or 90° elbow version



0142 0006



Version droite
Straight version



Version coudée à 90°
90° elbow version

Version Version	Référence Reference
Passer cloison droit Ø16mm / Straight bulkhead fitting Ø16mm	0142 0006
Passer cloison coudé 90° Ø16mm / 90° elbow bulkhead fitting Ø16mm	0142 0007